



XxxxProtect line (BasilProtect, BerryProtect, FresaProtect, OmaProtect, VerdaProtect)

Installation guide using clips



1.) Verify that the best before date is respected and that the tube is unopened ("seal" unbroken).



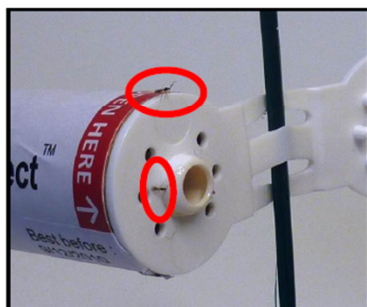
2.) Pop open the tube (at the **Open here** side).



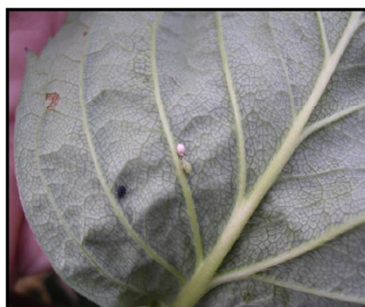
3.) Put the clip on a **horizontal** string of the crop and insert the tube into it.



4.) Place 1 tube for every 200 m² of your crop.
Caution: Avoid direct sunlight on the tube. Avoid condensation dripping spots.



5.) The first adults will start to emerge within a week. You might not see them as they don't spend much time around the tube before flying off in search of aphids.



6.) Mummies should appear in aphids colonies 10-15 days after introduction. They can usually be found under the leaves and can be white, black or golden.



XxxxProtect line (BasilProtect, BerryProtect, FresaProtect, OmaProtect, VerdaProtect)

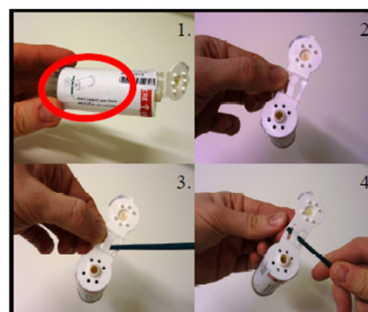
Installation guide using stakes



1.) Verify that the best before date is respected and that the tube is unopened ("seal" unbroken).



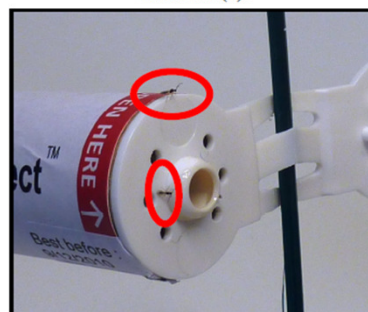
2.) Pop open the tube (at the **Open here** side).



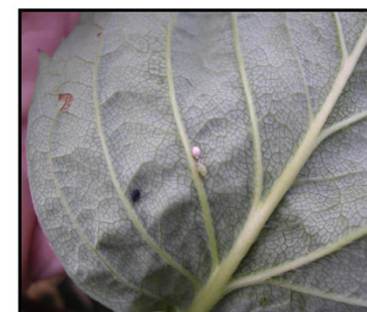
3.) Following the indications (1), hold the tube by the small slit of the hinge (2), pass the stake through the large slit (3) and up through the small slit (4).



4.) Place 1 tube for every 200 m² of your crop.
Caution: Take care not to damage your water supply. Avoid condensation dripping spots.



5.) The first adults will start to emerge within a week. You might not see them as they don't spend much time around the tube before flying off in search of aphids.



6.) Mummies should appear in aphids colonies 10-15 days after introduction. They can usually be found under the leaves and can be white, black or golden.